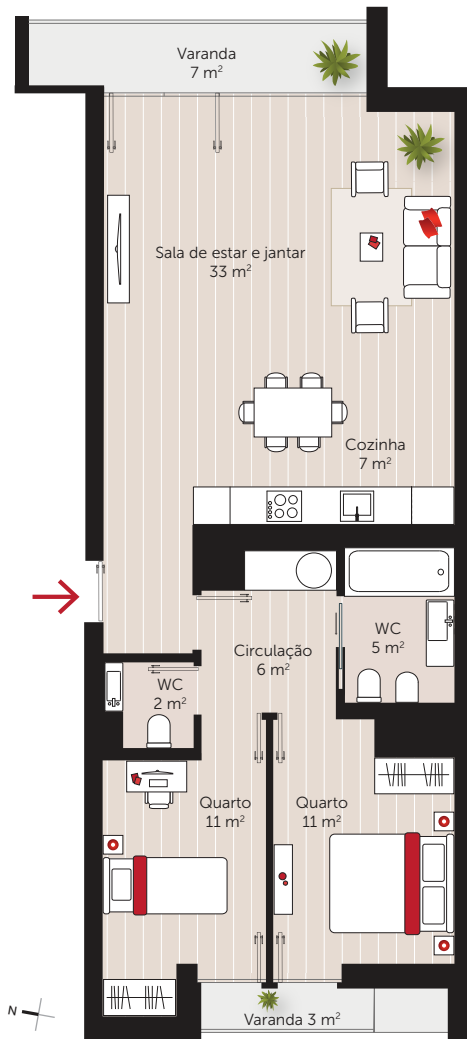


NOLIPA

Edifício Freixo – Entrada 3 / Freixo Building – Entrance 3



93 m² / sqm

Área bruta privativa / Gross private area

10 m² / sqm

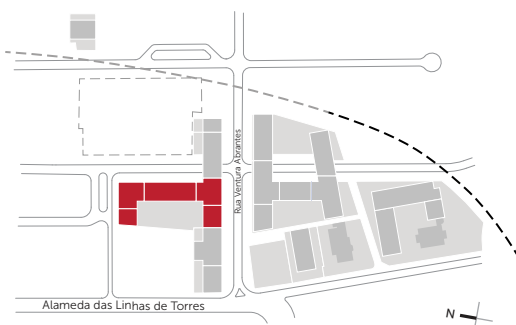
Varandas e Terraços / Balconies and Terraces

103 m² / sqm

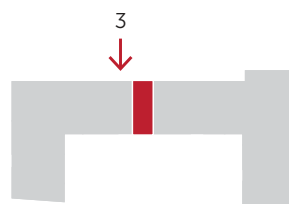
Área total / Total Area

1

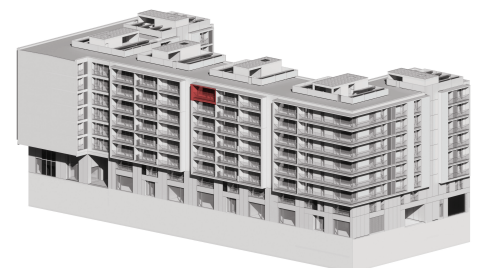
Lugar de estacionamento / Parking place



Planta geral / General plan



Localização no piso / Floor location



Perspectiva 3D / 3d Perspective

Fração / Apartment ID

7 C

Tipologia / Typology

T2

Piso / Floor

7

sem escala / no scale

As áreas aqui apresentadas são aproximadas e não têm carácter contratual.
The presented measurements are approximate and they are not contractual.